

User Manual

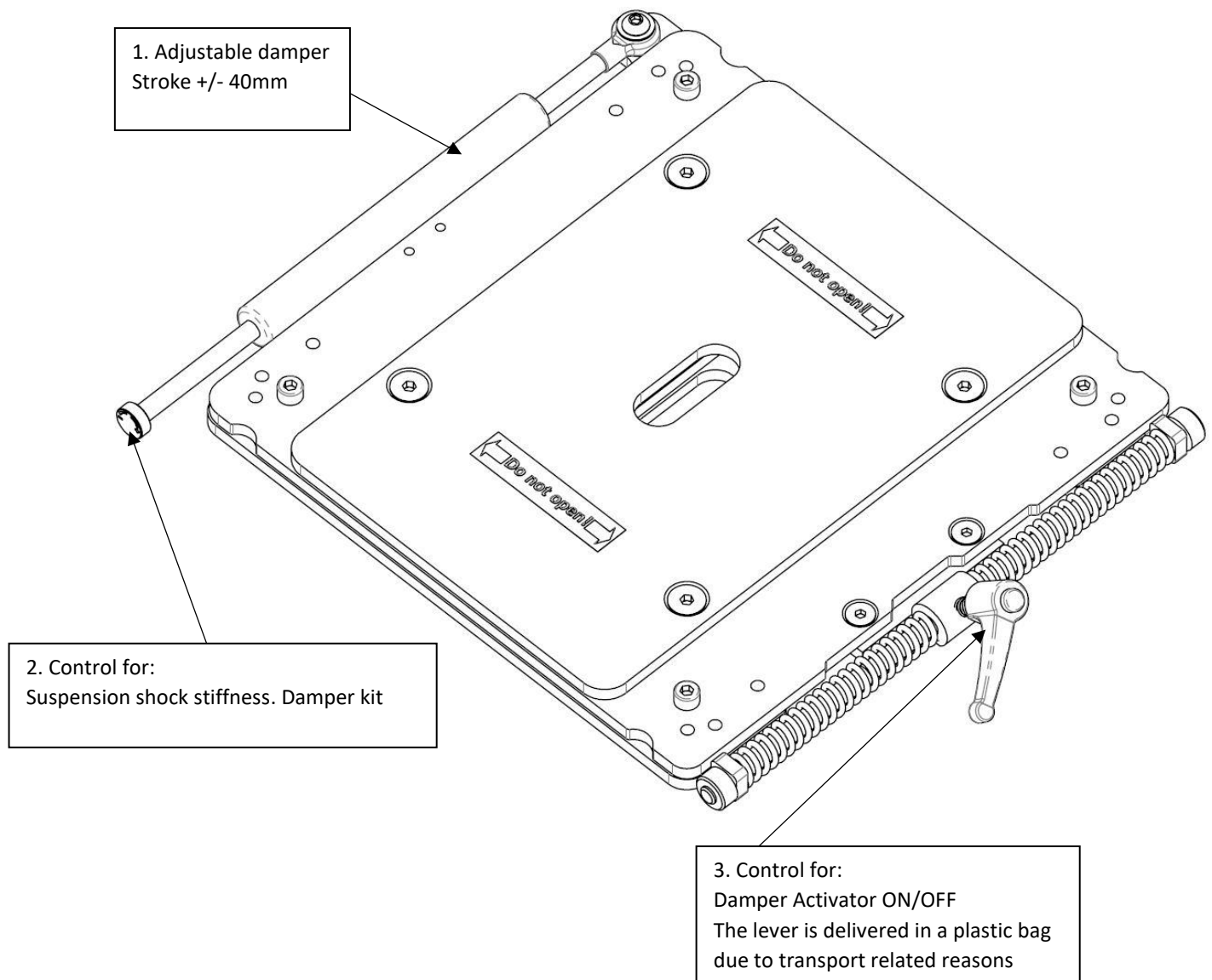
Revision B

Product:
2-Way Isolator

Part number:
14020301/03/05/07/09/21/28/39

Date:
2022-05-25

14020301/03/05/07/09/21/28/39 – Controls

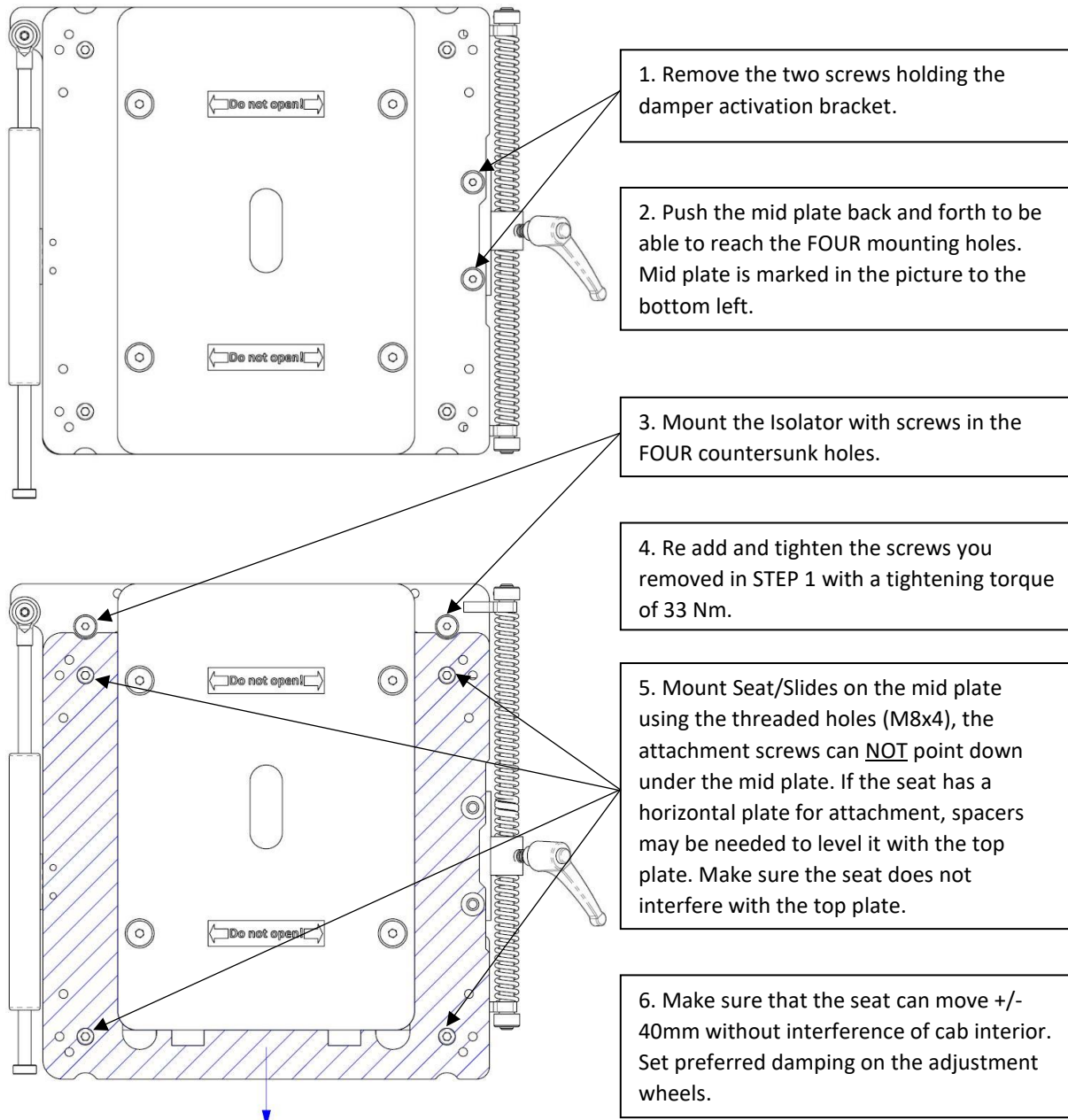


User Manual

Revision B

Product:	Part number:	Date:
2-Way Isolator	14020301/03/05/07/09/21/28/39	2022-05-25

Installation



User Manual

Revision B

Product:	Part number:	Date:
2-Way Isolator	14020301/03/05/07/09/21/28/39	2022-05-25

Adjustment Description

The shock stiffness can be selected between 6 steps, depending on operator preference. To increase shock stiffness, turn the circular knob in clockwise direction. To reduce shock stiffness, turn the knob counterclockwise.

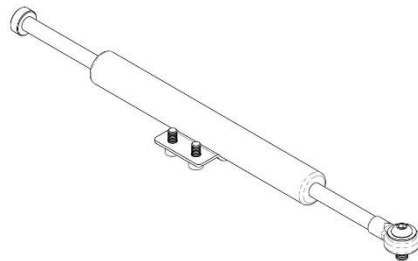
Maintenance

The 2-way isolator is a maintenance free product.

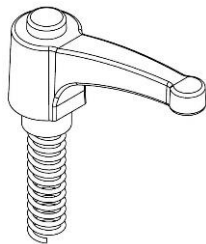
Spare part kits

The available service parts should only be replaced when not providing sufficient performance. The spare part kits are listed below:

	<u>Description</u>	<u>Part Number</u>
1.	Damper Kit 1	801108
2.	Lever M8x20 Kit	801335
3.	Wing Knob M8x20 Kit	803503



1. Damper Kit 1, 801108



2. Lever M8x20 Kit, 801335



3. Wing Knob M8x20 Kit, 803503